

Reframe 9571/9572

Nebbiolo 4042

Specifications

Contents

100% post-consumer recycled biodegradable* polyester

Weight

13.5 ± 1.0 oz./lin. yd

Width

54" min. useable

Repeat

7.38" horizontal | 5.88" vertical

Treatment

CO stain & water repellent

Backing

biodegradable* acrylic backcoating

Treatment

CO stain & water repellent

Backing

biodegradable* acrylic backcoating

Cleaning Code

<p>Standard Care Label W-S. Clean with water based cleaning agents, foam or pure, water free solvents.

Vacuuming or light brushing is recommended to prevent dust and soil buildup.

Bleach Cleanable - May be cleaned with a 10% bleach-to-water solution.

Rinse well after cleaning. May also be disinfected with hydrogen peroxide,

alcohol, and quaternary ammonium (quat) based cleaners. <a

</p>

Performance



Breaking Strength (ASTM D5034)

303 lbf min. warp and 325 lbf min. fill

Tear (ASTM D2261)

min. warp and fill

Seam Slippage (ASTM D4034)

120 lbf min. warp and 88 lbf min. fill

Pilling resistance (ASTM D3511)

Class 4 min.

Colorfastness to light (AATCC 16.3 Option 3)

Grade 4 min. at 40 hours

Colorfastness to crocking (AATCC 8)

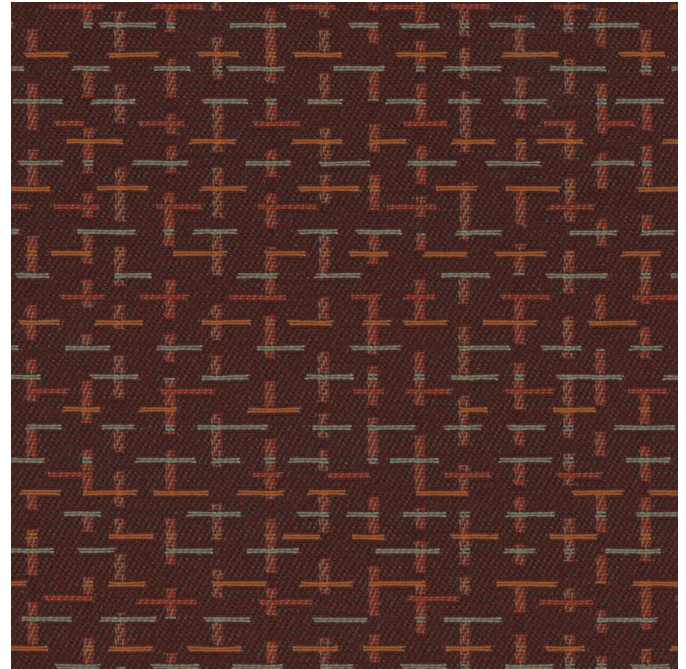
Grade 4 min. dry & Grade 4 min. wet

Wyzenbeek Abrasion resistance (ASTM D4157)

75,000 double rubs min. cotton duck

Miscellaneous

Proudly woven in North America supporting our local communities.



This pattern is included in the underwriters laboratory panel fabric recognition program. Additional testing of this U.L. recognized fabric is not required on approved panels from participating manufacturers.



Flammability

CA Technical Bulletin 117-2013 Section 1
NFPA 260-2013 Class I