

# Studio 54 2966

Stardust 7051

## Specifications

### Contents

100% polypropylene

### Weight

12.8 ± 1.0 oz./lin. yd.

### Width

66" min. useable

### Repeat

.1" vertical, none horizontal

### Treatment

polyester binder

### Backing

none

### Treatment

polyester binder

## Cleaning Code

<p>Standard Care Label W-S. Clean with water based cleaning agents, foam or pure, water free solvents. Vacuuming or light brushing is recommended to prevent dust and soil buildup. May be cleaned with a 4:1 water-to-bleach solution. Rinse well after cleaning. May also be disinfected with hydrogen peroxide, alcohol, and quaternary ammonium (quat) based cleaners.&nbsp;Read the&nbsp;<a href="https://www.guilfordofmaine.com/system/res/28/original/Guilford\_of\_Maine\_-\_Cleaning\_Disinfection\_Handbook.pdf?1596642657" target="\_blank">Cleaning & Disinfection Handbook</a></p>

## Performance



### Breaking Strength (ASTM D5034)

100 lbf min. warp and 250 lbf min. fill

### Tear (ASTM D2261)

25 lbf min. warp and 55 lbf min. fill

### Colorfastness to light (AATCC 16.3 Option 3)

Grade 4 min. at 40 hours

### Colorfastness to crocking (AATCC 8)

Grade 4 min. dry & Grade 3 min. wet

### Flammability

ASTM E84 Class I or A

### NRC of anechoic termination

1.00

### NRC of fabric in front of anechoic termination

.95

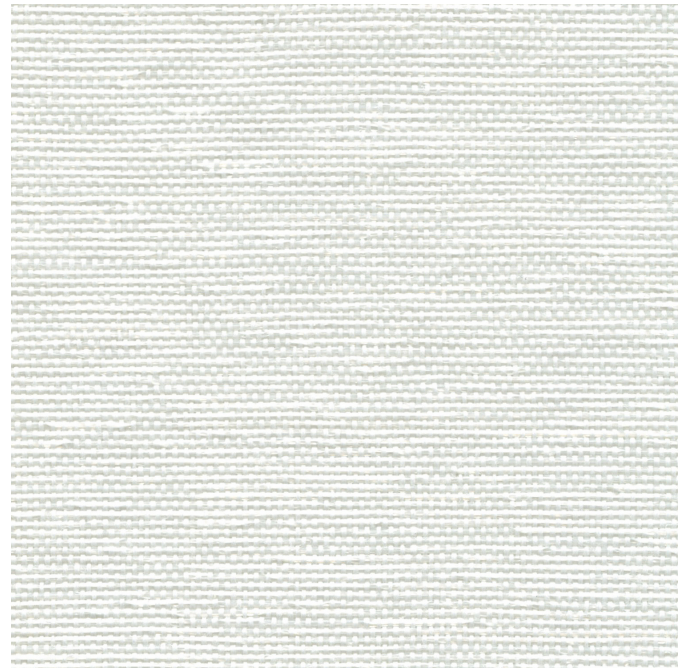
## Miscellaneous

Every effort has been made to ensure color accuracy of the digital images, however, please order a sample before specification. Application testing of this product is recommended. Colors may vary between dye lots. This is a directional fabric.

Proudly woven in North America supporting our local communities.

Variation in texture and luster, due to the manufacturing process, is to be expected and is part of the inherent beauty of Studio 54.

Pre-Approved: Kimball.



The plot below summarizes impedance tube measurements of absorption of an anechoic termination and various fabrics in front of the anechoic termination.

