

# Framework 2762

Capri 2831

## Specifications

---

### Contents

100% polyester

### Weight

9.5 ± 0.5 oz/lin. yd.

### Width

66" min. useable

### Repeat

none

### Treatment

none

### Backing

none

## Cleaning Code

---

<p>Standard Care Label W-S. Clean with water based cleaning agents, foam or pure, water free solvents. Vacuuming or light brushing is recommended to prevent dust and soil buildup. May also be disinfected with hydrogen peroxide, alcohol, and quaternary ammonium (quat) based cleaners.</p>

## Performance

---



### Breaking Strength (ASTM D5034)

150 lbf min. warp and 125 lbf min. fill

### Tear (ASTM D2261)

15 lbf min. warp and 10 lbf min. fill

### Colorfastness to light (AATCC 16.3 Option 3)

Grade 4 min. at 40 hours

### Colorfastness to crocking (AATCC 8)

Grade 4 min. dry & Grade 3 min. wet

### Flammability

ASTM E84 Class I or A

### NRC of anechoic termination

1.00

### NRC of fabric in front of anechoic termination

.90

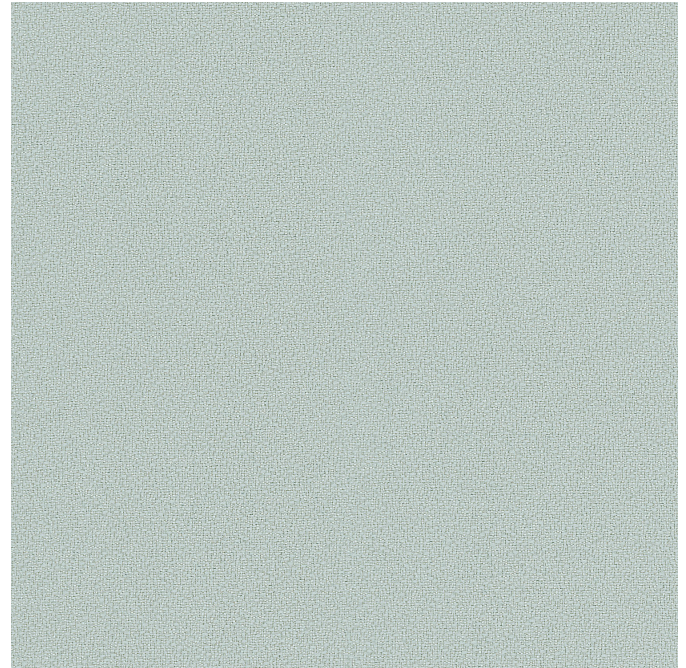
## Miscellaneous

---

Every effort has been made to ensure color accuracy of the digital images, however, please order a sample before specification. Application testing of this product is recommended. Colors may vary between dye lots. This is a directional fabric.

Proudly woven in North America supporting our local communities.

Pre-Approved: HNI and Trendway.



This pattern is included in the underwriters laboratory panel fabric recognition program. Additional testing of this U.L. recognized fabric is not required on approved panels from participating manufacturers.

The plot below summarizes impedance tube measurements of absorption of an anechoic termination and various fabrics in front of the anechoic termination.

