

Tidal 2180

Algae 953

Specifications

Contents

42% post-consumer recycled biodegradable* polyester including ocean waste
58% post-consumer recycled biodegradable* polyester

Weight

12.5 ± 1.0 oz./lin. yd

Width

54" min. useable

Repeat

none

Treatment

Backing

Cleaning Code

<p>Standard Care Label W-S. Clean with water based
 cleaning agents, foam or pure, water free solvents.
 Vacuuming or light brushing is recommended to
 prevent dust and soil buildup. May also be disinfected
 with hydrogen peroxide, alcohol, and quaternary
 ammonium (quat) based cleaners.</p>

Performance



Breaking Strength (ASTM D5034)

309 lbf min. warp and 238 lbf min. fill

Tear (ASTM D2261)

min. warp and fill

Seam Slippage (ASTM D4034)

115 lbf min. warp and 103 lbf min. fill

Pilling resistance (ASTM D3511)

Class 4 min.

Colorfastness to light (AATCC 16.3 Option 3)

Grade 4 min. at 40 hours

Colorfastness to crocking (AATCC 8)

Grade 4.5 min. dry & Grade 4.5 min. wet

Wyzenbeek Abrasion resistance (ASTM D4157)

75,000 double rubs min. cotton duck

Flammability

CA Technical Bulletin 117-2013 Section 1
NFPA 260-2013 Class I

NRC of anechoic termination

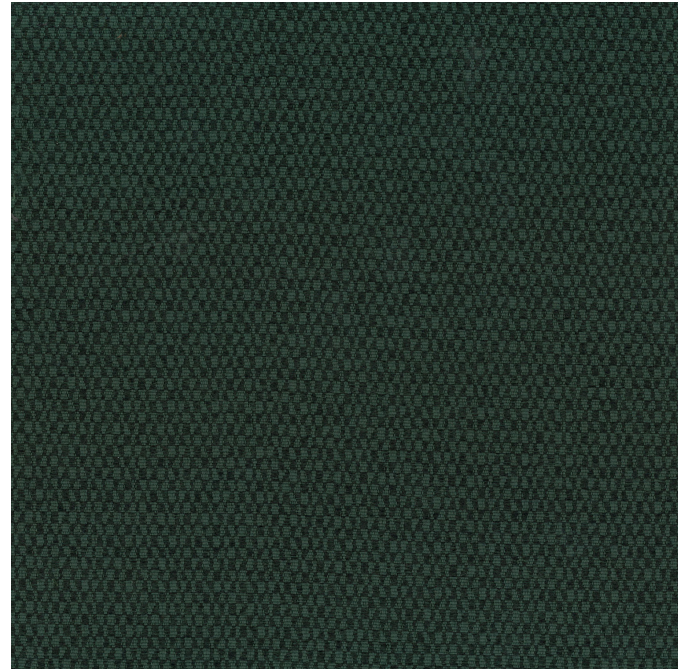
1.00

NRC of fabric in front of anechoic termination

.90

Miscellaneous

Proudly woven in North America supporting our local communities.



This pattern is included in the underwriters laboratory panel fabric recognition program. Additional testing of this U.L. recognized fabric is not required on approved panels from participating manufacturers.

