

# Shift 2179

Sienna 945

## Specifications

### Contents

100% post-consumer recycled biodegradable\* polyester

### Weight

12.3 ± 1.0 oz./lin. yd

### Width

54" min. useable

### Repeat

None

### Treatment

None

### Backing

Biodegradable\* acrylic backcoating

### Treatment

None

### Backing

Biodegradable\* acrylic backcoating

## Cleaning Code

<p>Standard Care Label W-S. Clean with water based cleaning agents, foam or pure, water free solvents. Vacuuming or light brushing is recommended to prevent dust and soil buildup. May also be disinfected with hydrogen peroxide, alcohol, and quaternary ammonium (quat) based cleaners.&nbsp;&lt;a href="https://www.guilfordofmaine.com/system/res/28/original/Guilford\_of\_Maine\_-\_Cleaning\_\_Disinfection\_Handbook.pdf?1596642657" target="\_blank">Cleaning & Disinfection Handbook</a></p>

## Performance



### Breaking Strength (ASTM D5034)

245 lbf min. warp and 294 lbf min. fill

### Tear (ASTM D2261)

min. warp and fill

### Seam Slippage (ASTM D4034)

100 lbf min. warp and 108 lbf min. fill

### Pilling resistance (ASTM D3511)

Class 4 min.

### Colorfastness to light (AATCC 16.3 Option 3)

Grade 4.5 min. at 40 hours

### Colorfastness to crocking (AATCC 8)

Grade 4 min. dry & Grade 4.5 min. wet

### Wyzenbeek Abrasion resistance (ASTM D4157)

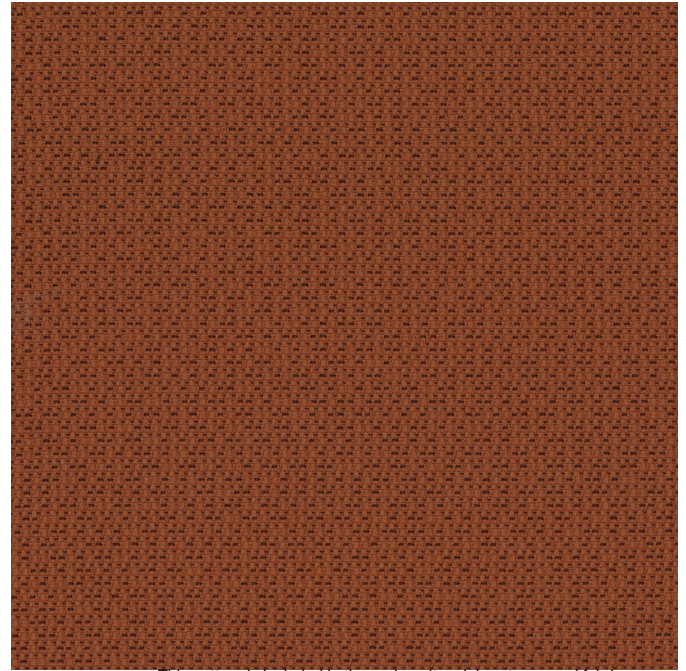
100,000 double rubs min. cotton duck

### Flammability

CA Technical Bulletin 117-2013 Section 1

## Miscellaneous

Proudly woven in North America supporting our local communities.



This pattern is included in the underwriters laboratory panel fabric recognition program. Additional testing of this U.L. recognized fabric is not required on approved panels from participating manufacturers.

