

# Palette with Crypton 2155C

Lichen

## Specifications

---

### Contents

100% polyester

### Weight

12 ± 1 oz./lin. yd.

### Width

54" min. useable

### Repeat

none

### Treatment

### Backing

## Cleaning Code

---

<p>Standard Care Label W-S. Clean with water based cleaning agents, foam or pure, water free solvents. Vacuuming or light brushing is recommended to prevent dust and soil buildup. May also be disinfected with hydrogen peroxide, alcohol, and quaternary ammonium (quat) based cleaners.</p>

## Performance

---



### Breaking Strength (ASTM D5034)

295 lbf min. warp and 280 lbf min. fill

### Tear (ASTM D2261)

85 lbf min. warp and 75 lbf min. fill

### Seam Slippage (ASTM D4034)

85 lbf warp & 75 lbf fill

### Pilling resistance (ASTM D3511)

Class 4 min.

### Colorfastness to light (AATCC 16.3 Option 3)

Grade 4 min. at 40 hours

### Colorfastness to crocking (AATCC 8)

Grade 4 min. dry & Grade 3 min. wet

### Wyzenbeek Abrasion resistance (ASTM D4157)

100,000 double rubs min. cotton duck

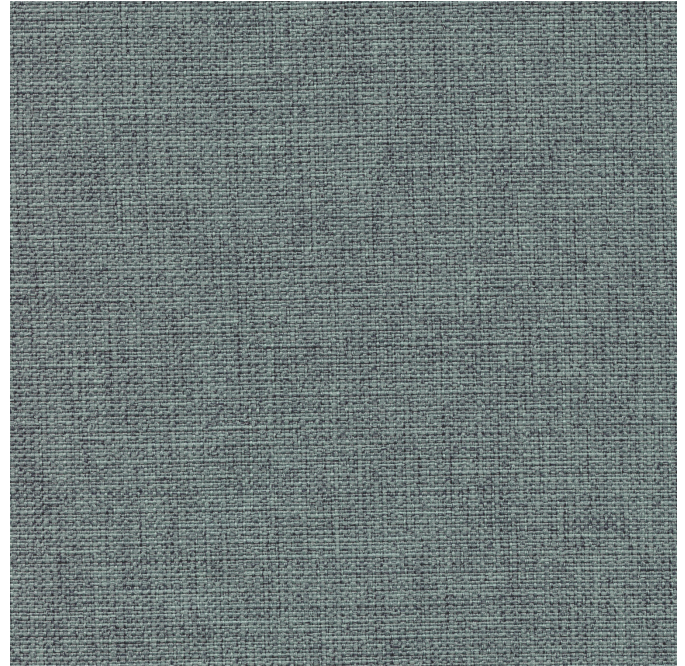
### Flammability

CA Technical Bulletin 117-2013 Section 1  
ASTM E84 Class I or A

## Miscellaneous

---

Proudly woven in North America supporting our local communities.



**Guilford of Maine**

Acoustical Performance for Panel Applications  
(ISO 10534-2)

