

# Studio 54 1405

Pewter Glow 171

## Specifications

### Contents

30% post-consumer recycled polyester  
70% polypropylene

### Weight

13.1 ± 0.5 oz./lin. yd

### Width

66" min. useable

### Repeat

none

### Treatment

polyester binder

### Backing

### Treatment

polyester binder

## Cleaning Code

<p>Standard Care Label W-S. Clean with water based cleaning agents, foam or pure, water free solvents. Vacuuming or light brushing is recommended to prevent dust and soil buildup. May be cleaned with a 10% bleach-to-water solution. Rinse well after cleaning. May also be disinfected with hydrogen peroxide, alcohol, and quaternary ammonium (quat) based cleaners. Read the&nbsp;<a href="https://www.guilfordofmaine.com/system/res/28/original/Guilford\_of\_Maine\_-\_Cleaning\_\_Disinfection\_Handbook.pdf?1596642657" target="\_blank">Cleaning & Disinfection Handbook</a>.</p>

## Performance



### Breaking Strength (ASTM D5034)

181 lbf min. warp and 192 lbf min. fill

### Tear (ASTM D2261)

min. warp and fill

### Colorfastness to light (AATCC 16.3 Option 3)

Grade 4.5 min. at 40 hours

### Colorfastness to crocking (AATCC 8)

Grade 4.5 min. dry & wet

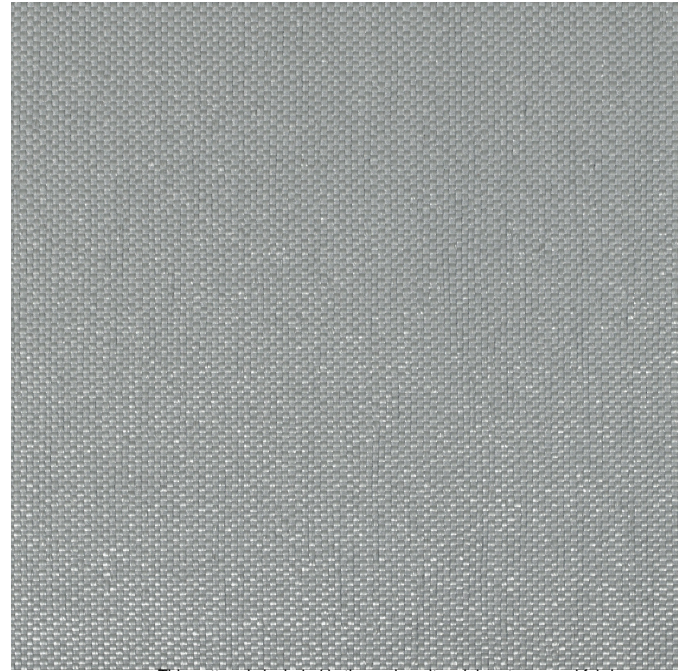
### Flammability

ASTM E84 Class I or A

## Miscellaneous

Every effort has been made to ensure color accuracy of the digital images, however, please order a sample before specification. Application testing of this product is recommended. Colors may vary between dye lots. This is a directional fabric.

Proudly woven in North America supporting our local communities.



This pattern is included in the underwriters laboratory panel fabric recognition program. Additional testing of this U.L. recognized fabric is not required on approved panels from participating manufacturers.

---

Acoustic Transparency: 85%

---

### Acoustical Performance

Acoustical Performance for Panel Applications  
(ISO 10534-2)

Frequency (Hz)	Studio 54 1405
250	0.90
500	0.87
1000	0.84
2000	0.83
NRC of fabric in front of anechoic termination	0.85
NRC of anechoic termination	1.00