

Studio 54 1405

Taupe Sheen 160

Specifications

Contents

30% post-consumer recycled polyester
70% polypropylene

Weight

13.1 ± 0.5 oz./lin. yd

Width

66" min. useable

Repeat

none

Treatment

polyester binder

Backing

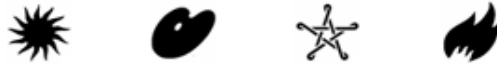
Treatment

polyester binder

Cleaning Code

<p>Standard Care Label W-S. Clean with water based cleaning agents, foam or pure, water free solvents. Vacuuming or light brushing is recommended to prevent dust and soil buildup. May be cleaned with a 10% bleach-to-water solution. Rinse well after cleaning. May also be disinfected with hydrogen peroxide, alcohol, and quaternary ammonium (quat) based cleaners. Read the Cleaning & Disinfection Handbook.</p>

Performance



Breaking Strength (ASTM D5034)

181 lbf min. warp and 192 lbf min. fill

Tear (ASTM D2261)

min. warp and fill

Colorfastness to light (AATCC 16.3 Option 3)

Grade 4.5 min. at 40 hours

Colorfastness to crocking (AATCC 8)

Grade 4.5 min. dry & wet

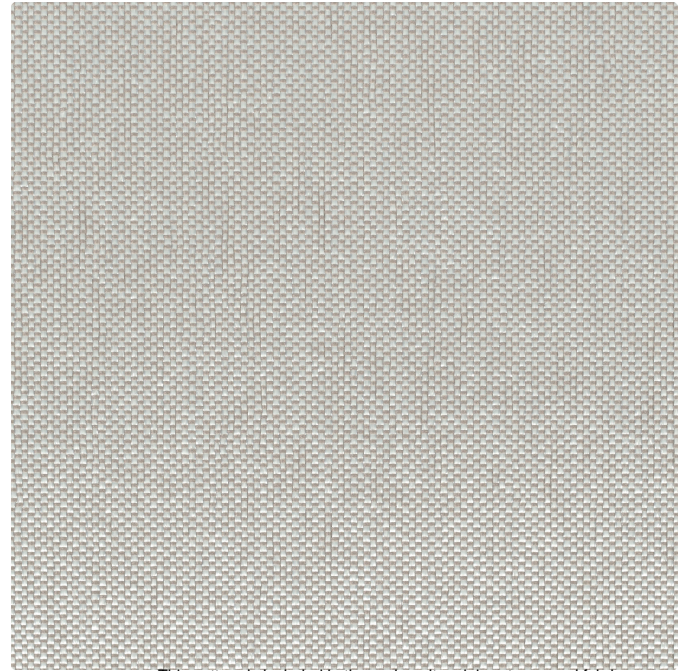
Flammability

ASTM E84 Class I or A

Miscellaneous

Every effort has been made to ensure color accuracy of the digital images, however, please order a sample before specification. Application testing of this product is recommended. Colors may vary between dye lots. This is a directional fabric.

Proudly woven in North America supporting our local communities.



This pattern is included in the underwriters laboratory panel fabric recognition program. Additional testing of this U.L. recognized fabric is not required on approved panels from participating manufacturers.

Acoustic Transparency: 85%

Acoustical Performance

Acoustical Performance for Panel Applications
(ISO 10534-2)

Frequency (Hz)	Studio 54 1405
250	0.90
500	0.87
1000	0.84
2000	0.83
NRC of fabric in front of anechoic termination	0.85
NRC of anechoic termination	1.00