

# Purpose 1302

Direction 1191

## Specifications

### Contents

100% post-consumer recycled  
biodegradable polyester

### Weight

14.1 ± 1.0 oz./lin. yd

### Width

67" min. useable

### Repeat

None

### Treatment

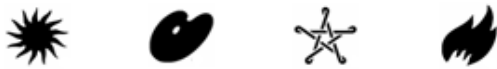
### Backing

## Cleaning Code

<p>Standard Care Label W-S. Clean with water based cleaning agents, foam or pure, water free solvents. Vacuuming or light brushing is recommended to prevent dust and soil buildup. May also be disinfected with hydrogen peroxide, alcohol, and quaternary ammonium (quat) based cleaners.&nbsp;<a

href="https://www.guilfordofmaine.com/system/res/28/original/Guilford\_of\_Maine\_-\_Cleaning\_\_Disinfection\_Handbook.pdf?1596642657" target="\_blank">Cleaning & Disinfection Handbook</a>.</p>

## Performance



### Breaking Strength (ASTM D5034)

205 lbf min. min. warp and 215 lbf min. min. fill

### Tear (ASTM D2261)

18 lbf min. min. warp and 14 lbf min. min. fill

### Colorfastness to light (AATCC 16.3 Option 3)

Grade 4 min. at 40 hours

### Colorfastness to crocking (AATCC 8)

Grade 4 min. dry & Grade 3 min. wet

### Flammability

ASTM E84 Class I or A

### NRC of anechoic termination

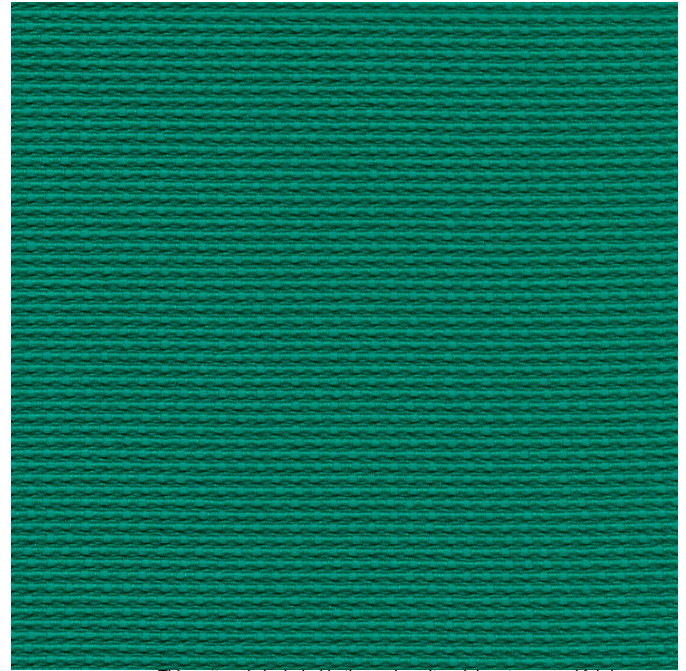
1.00

### NRC of fabric in front of anechoic termination

0.95

## Miscellaneous

Proudly woven in North America supporting our local communities

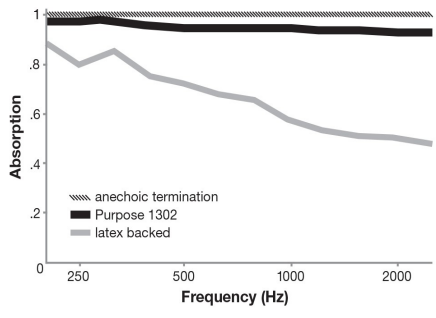


This pattern is included in the underwriters laboratory panel fabric recognition program. Additional testing of this U.L. recognized fabric is not required on approved panels from participating manufacturers.



**Guilford of Maine**

Acoustical Performance for Panel Applications  
(ISO 10534-2)



NRC of anechoic termination	1.00
NRC of fabric in front of anechoic termination	.95