

# Resolve 1301

Bold 1199

## Specifications

### Contents

100% post-consumer recycled  
biodegradable polyester

### Weight

16.0 ± 1.0 oz./lin. yd

### Width

67" min. useable

### Repeat

horizontal 12.7"  
vertical 32"

### Treatment

### Backing

## Cleaning Code

<p>Standard Care Label W-S. Clean with water based cleaning agents, foam or pure, water free solvents. Vacuuming or light brushing is recommended to prevent dust and soil buildup.<br />

<strong>Bleach Cleanable</strong> - May be cleaned with a 10% bleach-to-water solution. Rinse well after cleaning. May also be disinfected with hydrogen peroxide, alcohol, and quaternary ammonium (quat) based cleaners. Read the

&nbsp;<a href="https://www.guilfordofmaine.com/system/res/28/original/Guilford\_of\_Maine\_-\_Cleaning\_\_Disinfection\_Handbook.pdf?1596642657">

Cleaning & Disinfection Handbook</a>.</p>

## Performance



### Breaking Strength (ASTM D5034)

315 lbf min. min. warp and 405 lbf min. min. fill

### Tear (ASTM D2261)

20 lbf min. min. warp and fill

### Colorfastness to light (AATCC 16.3 Option 3)

Grade 4 min. at 40 hours

### Colorfastness to crocking (AATCC 8)

Grade 4 min. dry & Grade 3 min. wet

### Flammability

ASTM E84 Class I or A

### NRC of anechoic termination

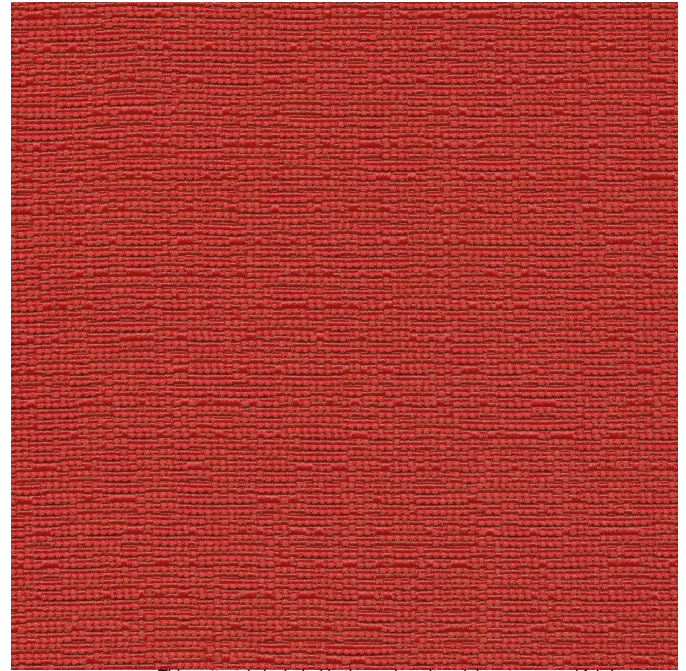
1.00

### NRC of fabric in front of anechoic termination

0.90

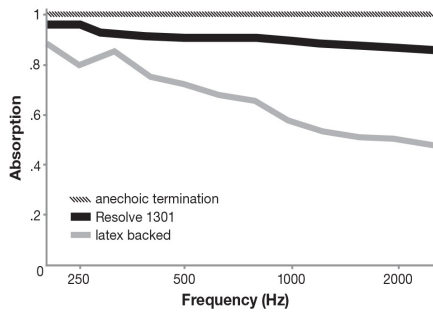
## Miscellaneous

Proudly woven in North America supporting our local communities.



This pattern is included in the underwriters laboratory panel fabric recognition program. Additional testing of this U.L. recognized fabric is not required on approved panels from participating manufacturers.

Acoustical Performance for Panel Applications  
(ISO 10534-2)



NRC of anechoic termination	1.00
NRC of fabric in front of anechoic termination	.90