

Marin 1300

Dolphin 1147

Specifications

Contents

90% post-consumer recycled polyester
including ocean waste
10% polyester

Weight

12.5 ± 1.0 oz./lin. yd

Width

67" min. useable

Repeat

horizontal 12.76"
vertical 19.1"

Treatment

Backing

Cleaning Code

<p>Standard Care Label W-S. Clean with water based cleaning agents, foam or pure, water free solvents.

Vacuuming or light brushing is recommended to prevent dust and soil buildup. May also be disinfected with hydrogen peroxide, alcohol, and quaternary ammonium (quat) based cleaners. Read the [and](https://www.guilfordofmaine.com/system/res/28/original/Guilford_of_Maine_-_Cleaning_Disinfection_Handbook.pdf?1596642657) [Cleaning & Disinfection Handbook](https://www.guilfordofmaine.com/system/res/28/original/Guilford_of_Maine_-_Cleaning_Disinfection_Handbook.pdf?1596642657).

Performance



Breaking Strength (ASTM D5034)

245 lbf min. min. warp and 170 lbf min. min. fill

Tear (ASTM D2261)

18 lbf min. min. warp and 14 lbf min. min. fill

Colorfastness to light (AATCC 16.3 Option 3)

Grade 4 min. at 40 hours

Colorfastness to crocking (AATCC 8)

Grade 4 min. dry & Grade 3 min. wet

Flammability

ASTM E84 Class I or A

NRC of anechoic termination

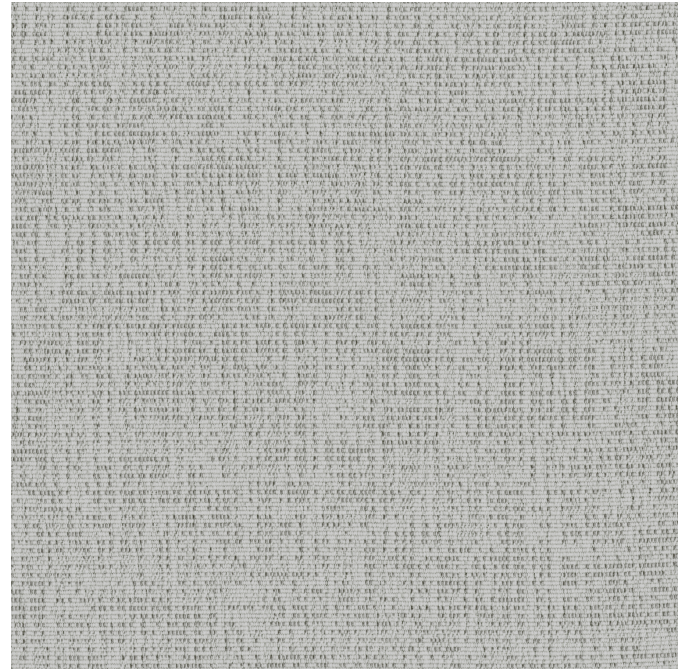
1.00

NRC of fabric in front of anechoic termination

0.90

Miscellaneous

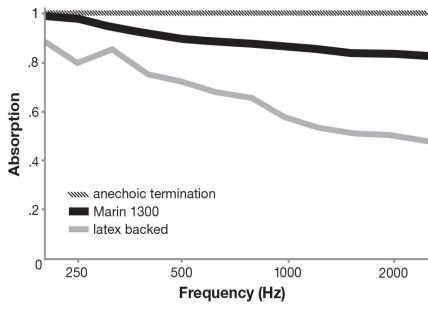
Proudly woven in North America supporting our local communities.



This pattern is included in the underwriters laboratory fabric recognition program. Additional testing of this U.L. recognized fabric is not required on approved panels from participating manufacturers.



Acoustical Performance for Panel Applications
 (ISO 10534-2)



NRC of anechoic termination	1.00
NRC of fabric in front of anechoic termination	.90